



GAI-TRONICS®  
A HUBBELL COMPANY

# Switch Replacement Kit—Rigcom Only

## Model 12802-001

## Confidentiality Notice

This manual is provided solely as an operational, installation, and maintenance guide and contains sensitive business and technical information that is confidential and proprietary to GAI-Tronics. GAI-Tronics retains all intellectual property and other rights in or to the information contained herein, and such information may only be used in connection with the operation of your GAI-Tronics product or system. This manual may not be disclosed in any form, in whole or in part, directly or indirectly, to any third party.

## General Information



The Model 12802-001 Switch Replacement Kit is for use in GAI-Tronics' Model 400-001 and 400-002NS RigCom units. This kit includes the following components:



Qty	Description
1	Explosion-proof black push button (1-pole)
1	Explosion-proof rotary adapter switch
1	Operator harness cable assembly



## Installation

### Important Safety Instructions

- **Read, follow, and retain instructions**—All safety and operating instructions should be read and followed before operating the unit. Retain instructions for future reference.
- **Heed warnings**—Adhere to all warnings on the unit and in the operating instructions.
- **Attachments**—Attachments not recommended by the product manufacturer should not be used, as they may cause hazards.

 **CAUTION**  —These servicing instructions are for use by qualified service personnel only. To reduce risk of electric shock, do not perform any servicing other than that contained in the operating section unless you are qualified to do so.

 **WARNING**  —Before performing any of the following steps, remove all power from the station.

 **CAUTION**  —To reduce the risk of ignition of hazardous atmospheres, disconnect the equipment from the supply circuit before making any adjustments to the PCBA's settings.

## Open the Station

1. Remove the 12 bolts from the front of the enclosure.
2. Open the front cover.
3. Unplug the cable assembly from the PCBA in the rear of the enclosure (see [Figure 1](#)).

## Switch Replacement

1. Loosen the two set screws on the rotary switch, and remove the knob from the rotary switch shaft.
2. Unscrew the push-button switch cover from the push-button switch.
3. Unscrew the spacers from the shaft collars of the two switches.
4. Unscrew the blue and violet wires from the push-button switch (see [Figure 1](#)).
5. Unscrew the push-button switch and the rotary adapter switch from the front cover.
6. Remove the potentiometer from the rotary switch shaft and install the new potentiometer with wiring harness onto the shaft.
7. Screw the new push-button switch and the rotary adapter switch into the front cover.  
Both switches must protrude from the front of the enclosure by 0.54 inch.
8. Using a flat head screwdriver and hammer, tap the lock nut on each switch until it is set tight to the enclosure lid.
9. Screw one spacer onto each of the switches on the front cover.
10. Fasten the rotary knob onto the rotary switch shaft, and screw the cover onto the push-button switch.
11. Screw the blue and violet wires into the push-button switch (see [Figure 1](#)).
12. Plug in the connector on the cable assembly into the PCBA (see [Figure 1](#)).

## Close the Station

1. Inspect and clean the machined-flange flame-joint surfaces of both the cover and box. Surfaces must be smooth, free of nicks, scratches, dirt, or any foreign particle build-up that would prevent a proper seal. Surfaces must seat fully against each other to provide a proper explosion-proof joint. Clean surfaces by wiping with a clean lint-free cloth.
2. Close the front cover and screw the 12 bolts back into the enclosure. The recommended torque setting for the cover bolts is 17 ft·lb (23 N·m).

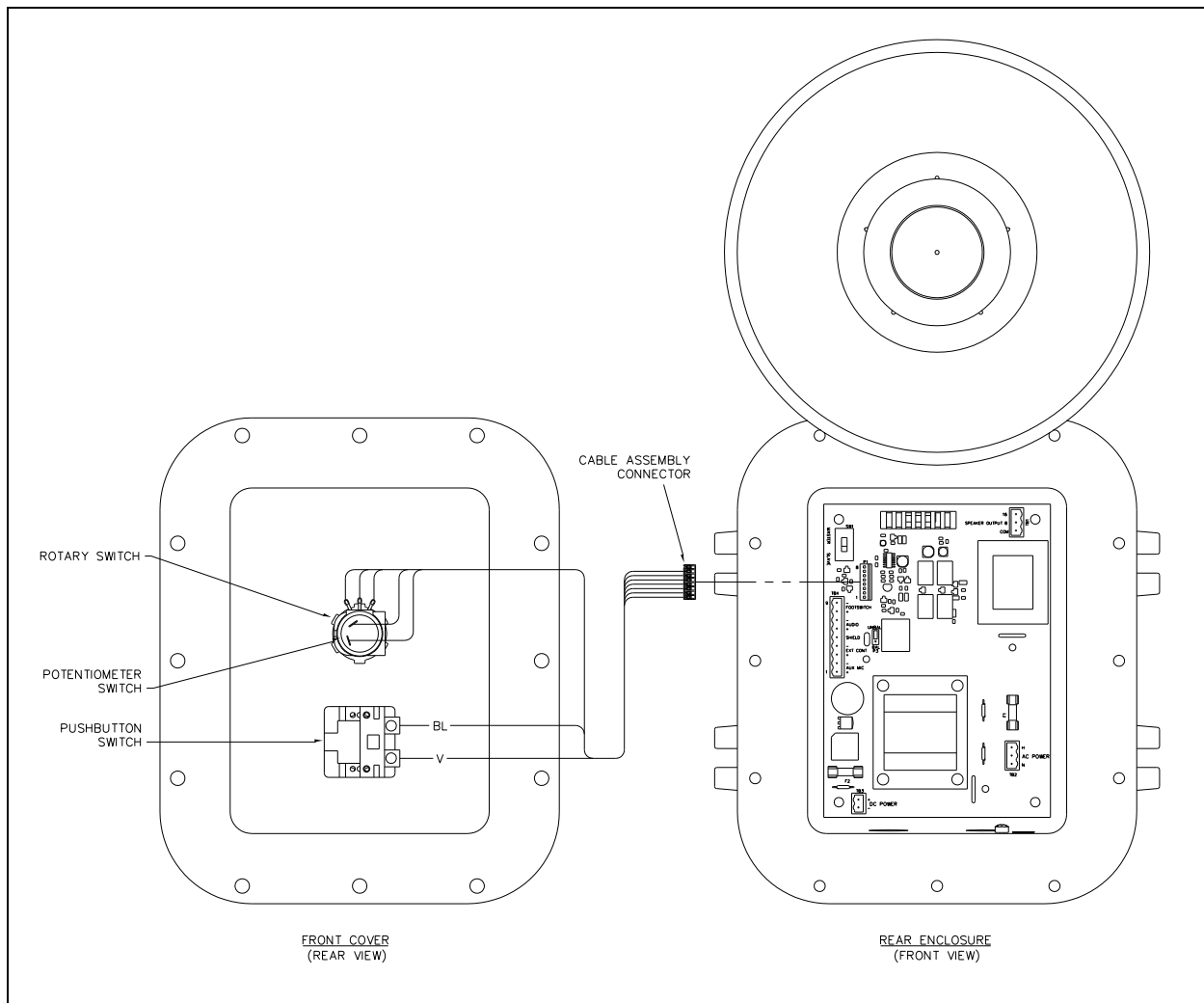


Figure 1. Switch Replacement Diagram